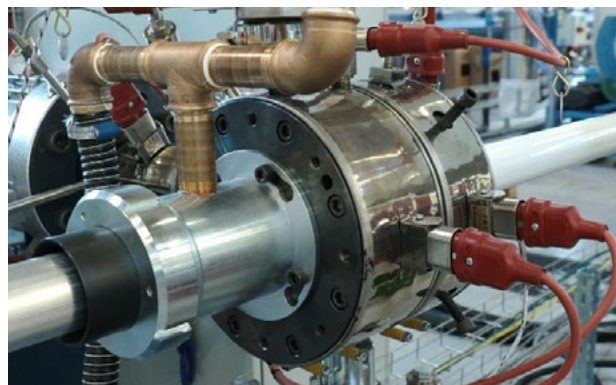
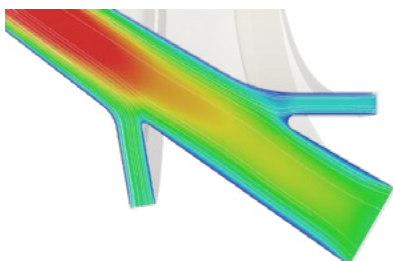
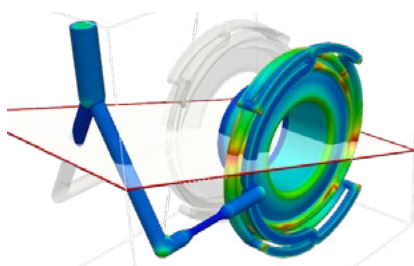


EXTRUSION HEADS FOR PREMIUM QUALITY PRODUCTS

Extrusion Heads in the field of Plastics Processing comprise a key part in the complete production line

High demands from the market for end product quality, appearance & performances over lengthy duration, as well as the competitive environment, calls for responding solutions from the tool makers.

THE Machines develops, designs, manufactures and assembles Extrusion Heads tailored to multiple end-application fields, notably Multi-Layer pipes – for Hot & Cold water applications and Irrigation tubes. Utilizing advanced simulations & engineering, precision manufacturing, along with proven field experience gained over many years, market demands & challenges are met, providing competitive advantages to our clients.



Technical data

Longitudinal Heads

Diameter	Ø 16 - 65 mm
Max Output	400 Kg/h
Distributor	Spiral
Internal heating	2 zones



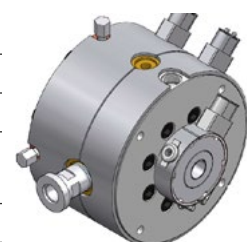
Cross Heads - Multi Layer & Collapsible ("LayFlat") Hoses

Diameter	Ø 12 - 160 mm
Thickness	0.05-1.0mm
Max Output	350 Kg/h
Configuration	Single or Dual Layer
Stripe Marking	Optional



Cross Heads – Irrigation

Diameter	Ø 12 - 40 mm
Thickness	0.12-1.2mm
Max Output	400 Kg/h
Configuration	Single, Dual or 3-layer ABA/ABC
Stripe Marking	2 zones



Features and benefits

- Advanced melt distribution designs – for end product long-term performances, dimension precision and appearance
- Wall thickness uniformity - for minimized material consumption
- Ease of handling & maintenance – rapid Product/ Tool change, facilitated centring
- Co-Extrusion adapted - Multi layer & stripe/s up on demand

Applications

- Heating & Plumbing
- Drip Irrigation
- Cable