

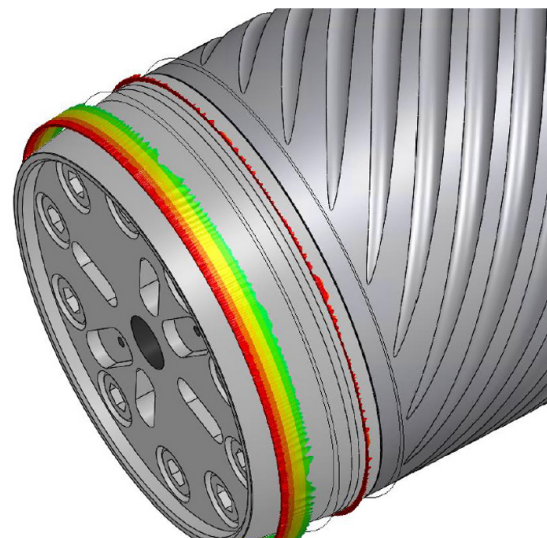
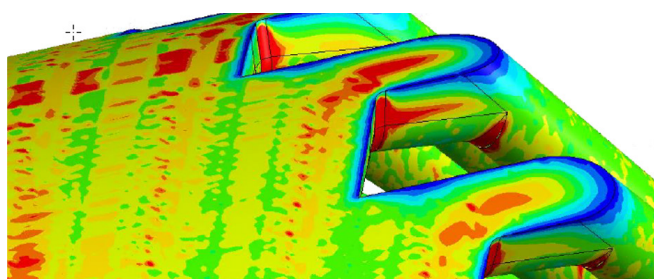
INTRODUCING OUR NEW LONGITUDINAL EXTRUSION HEAD, THE 'SLH063'

As a leading Extrusion solution provider, we are pleased to announce the launch of our latest innovation – the SLH063, a novel, cutting-edge longitudinal extrusion head.

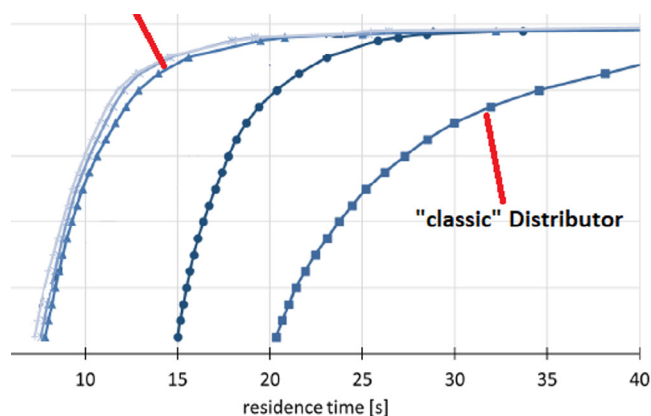
The ever-growing market demand for high-quality products at reduced production costs has driven THE Machines to develop the SLH063. With mastery of all stages, spanning from R&D and engineering using advanced simulations, through non-compromised precision machining, and on to assembly, THE Machines is your partner for product and production excellence.

Key Advantages

- Versatile Material Compatibility extrude with a single head a wide selection of polymers, as PE-RT of different properties, and PE-XB.
- Broad pipe dimensions Ø16 up to Ø63mm!
- Unprecedented Melt Homogeneity: thanks to ingenious design, the SLH063 ensures unmatched melt uniform properties, so ensuring the tightest product concentricity and elevated mechanical properties.



- Ease of Cleaning and Robust Construction: THE Machines has considered every aspect. The extrusion head has a robust construction and is simple to clean, promising long-lasting durability even with regular use.



The SLH063 is more than just an extrusion head; it's a solution that revolutionises your production process. Get ready to take your tube manufacturing to new heights with THE Machines.